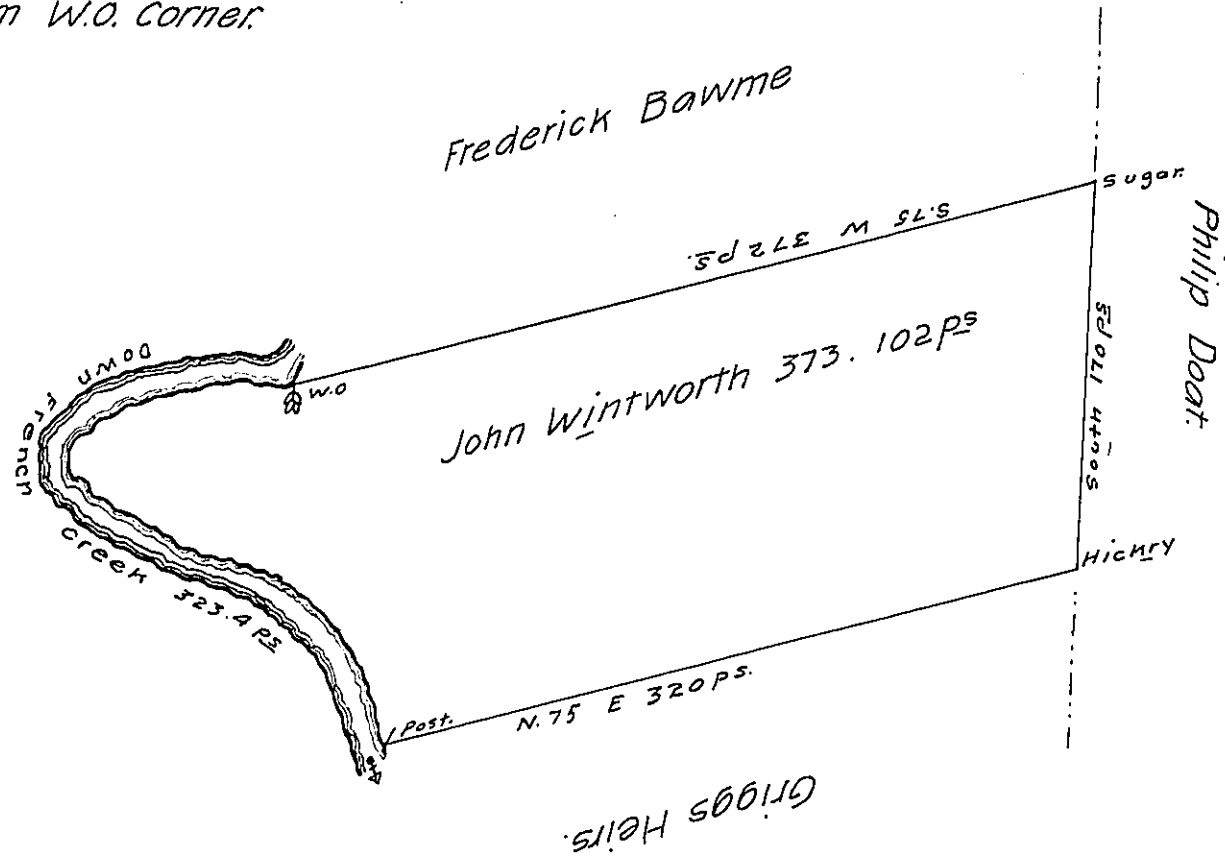


River Courses from W.O. Corner.

- S. 59 W - 11
- S. 86 W - 20
- S. 83 W - 19
- S. 67 W - 44.5
- S. 45° W - 17
- S. 85° E - 14
- S. 59° E - 18
- S. 44° E - 22
- S. 64° E - 20
- East - 24.9
- S. 69° E - 20
- S. 56° E - 25
- S. 25° E - 49
- S. 20° E - 19 to post.  
323.4 ps



Situate on and adjoining the East Side of French Creek <sup>in</sup>  
 Allegheny County Containing 373 Acres 102 perches & allowance of  
 Six per Cent for Roads & is Surveyed the 27<sup>th</sup> day of May  
 1794 In pursuance of his Improvement Bearing date the 3<sup>d</sup> day  
 of April 1792

W<sup>m</sup> Power, D.L.S.,

To Daniel Brodhead, Esq.,  
 Surveyor General.

IN TESTIMONY that the above is a copy of the original remaining on file in  
 the Department of Internal Affairs of Pennsylvania, made  
 conformably to an Act of Assembly approved the 16th day of  
 February, 1833, I have hereunto set my Hand and caused  
 the Seal of said Department to be affixed at Harrisburg,  
 this twenty eighth day of September, 1906

*Asa C. Brown*  
 Secretary of Internal Affairs.